



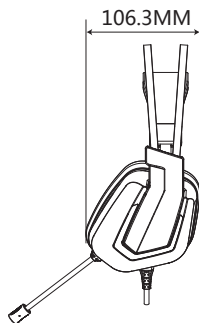
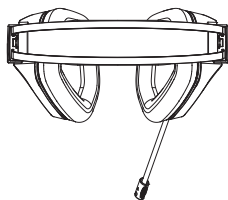
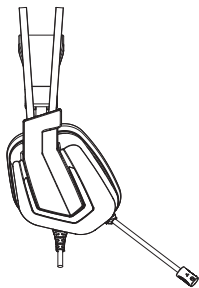
User Manual



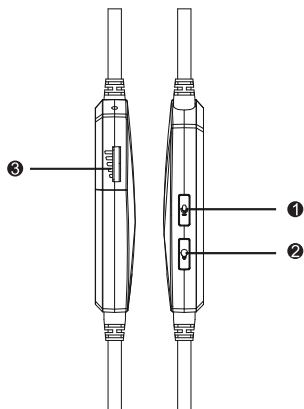
Headphone x1



User manual x1



Audio control box



- ① Mic On/Off
- ② Light control
- ③ Volume control

Parameter

Headphone

Connect: USB wired

Cable: 2.4 meters braided cable

USB audio solution: CM108B

Driver unit: $\Phi 50\text{mm} * 10\text{mm(H)}$

Loading impedance: $16 \pm 15\% \Omega$

Frequency response: 20~20KHz

Power rating: 15mW (Max)

THD: $\leq 5\%$

Lighting: RGB

Weight: 320 \pm 10g(Not included cable)

Dimension: 212.7*206.9*106.3 mm

Microphone

Driver unit: $\phi 6\text{mm} * 2.7\text{mm(H)}$

Sensitivity: $-42 \pm 3\text{dB}$

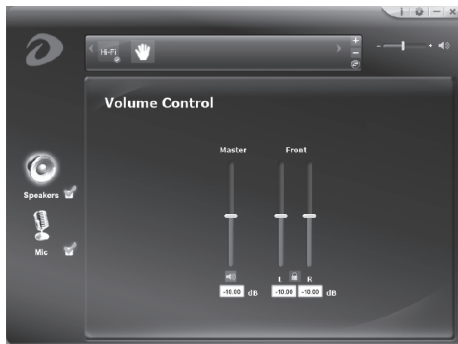
Directivity: omnidirectional

Output impedance: 2.2K Ω

Frequency response: 100~10000Hz

THD: $\leq 5\%$

Download driver from Dareu's official website(www.dareu.com) and install it.
*Pictures are for reference only.



1

Volume Control

2

Application setting



EH732

Mfgr.: Dongguan Togran Electronics Technology Co., Ltd
Addr.: No. 110, Shijie Shidan Mid Rd, Shijie Town, Dongguan City,
Guangdong Province, China 523290

Tel.: +86 769 8630 8806 Fax: +86 769 8630 8826
Email: Info@dareu.com CS@dareu.com
Web: www.dareu.com